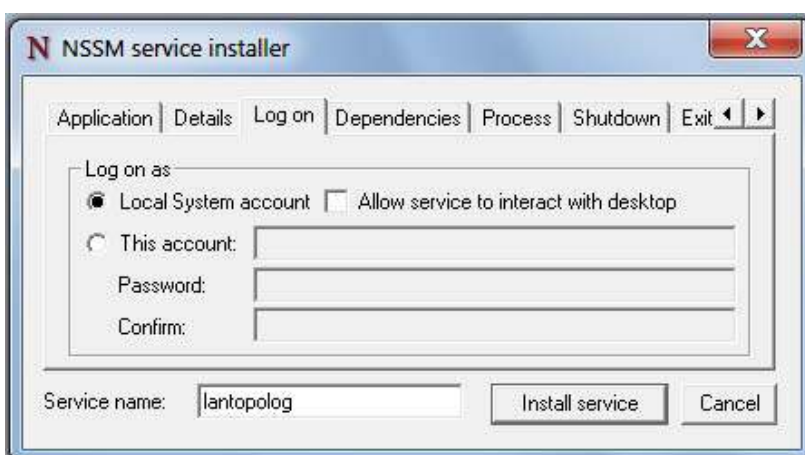
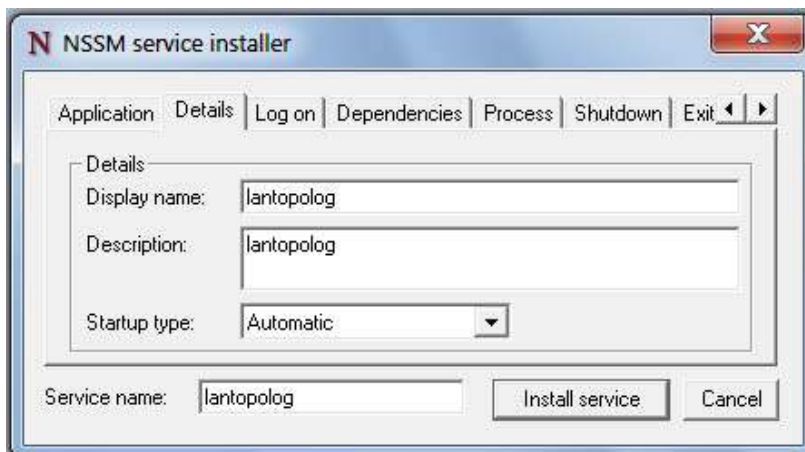
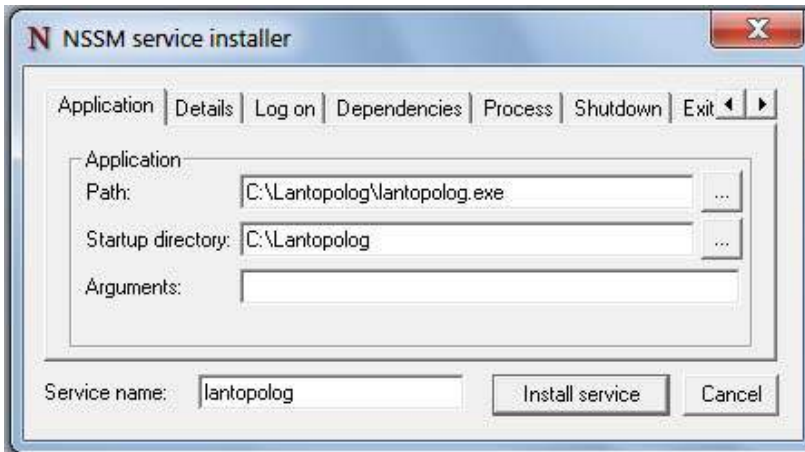


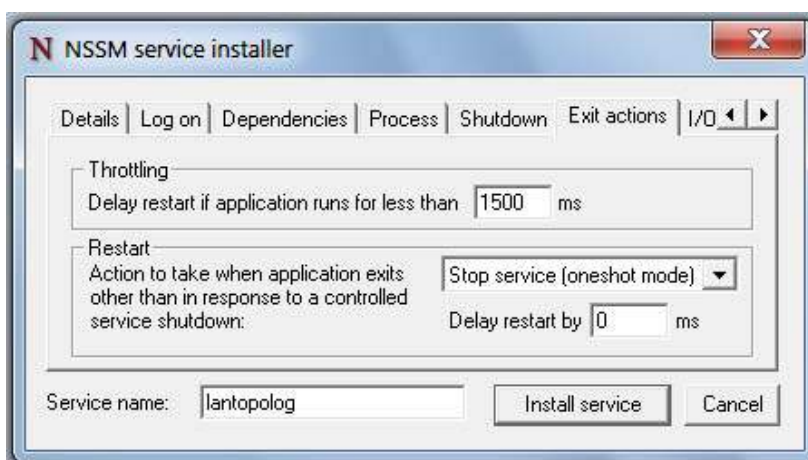
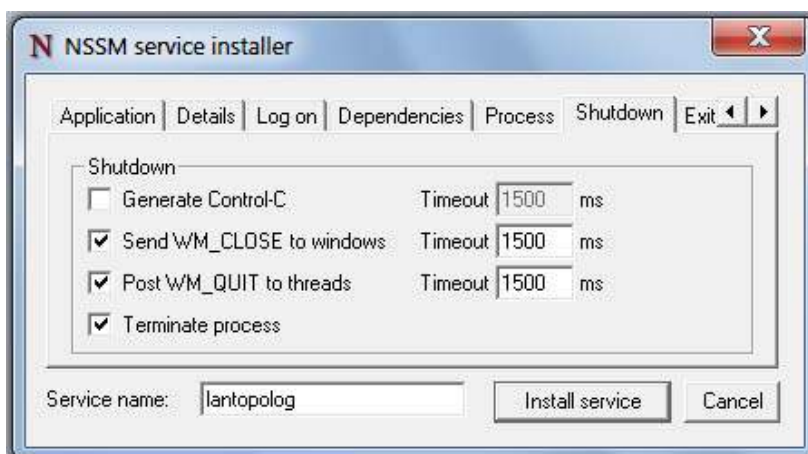
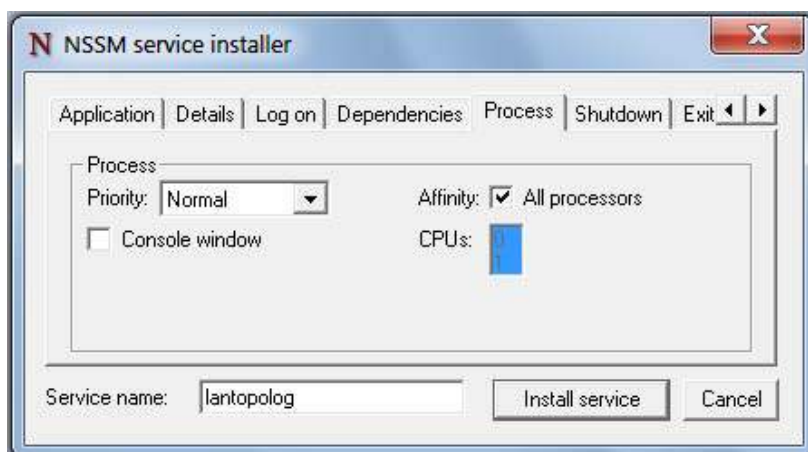
LanTopoLog service manager

LanTopoLog service manager is a wrapper to run LanTopoLog as service using NSSM. NSSM is a service helper program similar to svrany. It can start any application as an NT service.

Follow the instruction to install LanTopoLog as service.

1. Download the latest portable version of LanTopoLog and unzip it to any folder (for example c:\Lantopolog\). Run LanTopoLog, discover your network and set all options. LanTopoLog service will use these options. Close LanTopoLog.
2. Download LanTopoLog service manager and unzip it to any folder.
3. Run LanTopoLog service manager (run the file ltl_svc_mgr.exe as administrator).
4. Click "Install Service" button. Configure the service and click "Install service" button in the NSSM installer window. The screenshots below will help you.





Note:

The name of service must be: "lantopolog" Do not change this name.

Local System is a high-privileged built-in account. You can create a user with minimum rights to run lantopolog service.

Now you can start service, stop service, edit service. LanTopoLog service and GUI version of LanTopoLog cannot be running simultaneously. To update network map or change options, stop LanTopoLog service. Run GUI version of LanTopoLog (c:\Lantopolog\lantopolog.exe). Perform necessary tasks. Stop GUI version of LanTopoLog. Run LanTopoLog service.

Feel free to email me any errors or comments to support@lantopolog.com